

Aqua TROLL Quickstart Guide

Instrument & Accessories



1. Aqua TROLL 100 or 200 instrument
2. Rugged Twist-Lock Cable
3. Wireless TROLL Com or USB TROLL Com
4. Bluetooth-enabled mobile device or Windows PC

Getting Started (3 Steps)

1 Connect the instrument to TROLL Com communication device.



Remove desiccant from cable.



Pull textured cable sleeve back.



Press cable into instrument connector.



Slide textured sleeve forward. Twist until click.



Attach the opposite end of cable to the Wireless TROLL Com.



Push and twist to lock cable to communication device.



Your instrument is now ready to pair with the VuSitu mobile app or Win-Situ software.

or



Alternatively, use a standard USB TROLL Com.



After attaching cable to instrument, connect cable to the TROLL Com.



Push and twist until the click.

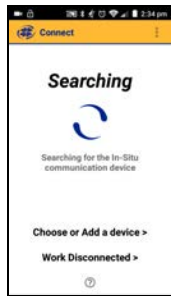


Plug the USB connector into your PC to connect via Win-Situ.

2 Connect to software.

Option 1: Connect to the VuSitu mobile app via Bluetooth (recommended)

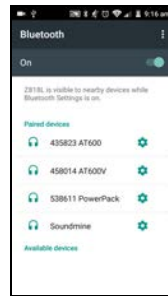
 Download the VuSitu mobile app from the Google Play Store at play.google.com.



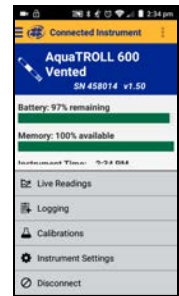
Turn on the Wireless TROLL Com and open VuSitu mobile app. Select **Choose or Add a Device**.




Select **Add New Device** when connecting for the first time.



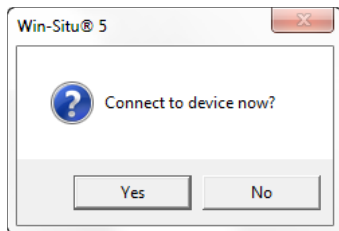
From device's Bluetooth Settings screen, tap serial number of instrument to connect.



Tap mobile device's back button to view Connected Instrument screen.

 VuSitu's on-screen instructions will guide you through instrument calibration, live readings, log setup and data sharing.

Option 2: Connect to Win-Situ on a PC via Bluetooth



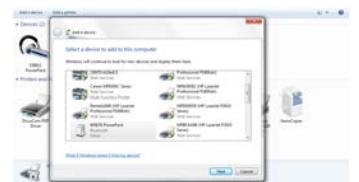
Open Win-Situ. Select **Yes** when asked to connect now.



Click **Add Bluetooth Device** button.



From Devices and Printers window, click **Add a device**.



Select your Wireless TROLL Com from the list of Bluetooth-enabled devices. Click **Next**.



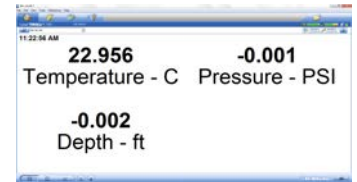
Make sure device is highlighted in Select a Bluetooth Device window and click check mark button.



Click check mark button on Default Communication Settings window to close.

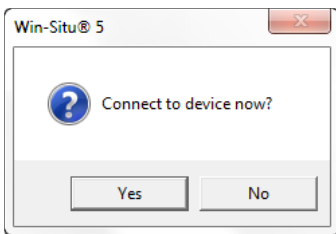


Click yellow connect button at bottom of screen.

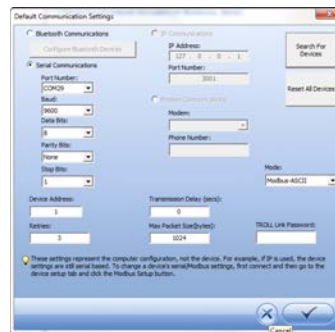


Your instrument is now connected to Win-Situ and you should see the Home screen.

Option 3: Connect to Win-Situ on a PC via USB TROLL Com



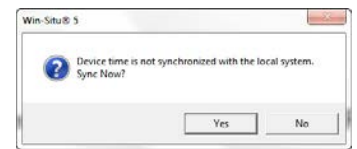
Open Win-Situ. Select **No** when asked *Connect to device now?*



Choose Preferences > Com Settings from menu bar. Select Serial Communications radio button. Click check mark button.



Click the yellow connect button at the bottom right of the screen.



Click **Yes** when prompted to sync device time with local system.

3 Learn more.

Get complete instructions for calibration, logging and working with your data in the product manual. Download it from www.in-situ.com.